



colonialbus.com

5171 Intercoastal Court | Monrovia, MD 21770
800.GO.BY.BUS | 301.865.2401 (fax)

Stock # F4450

Vehicle Specifications

New/Used:	New	Chassis:	Ford F450	Ambulatory Capacity:	25
Year:	2019	Fuel:	Gas	# Wheelchair:	0
Mileage:	N/A	VIN:	1FDFF4F55KDC30619	Luggage:	Overhead
Type:	Midsize	Wheelbase:	190"	Floor Layout:	FF
Body Style:	Cutaway	GVWR:	15,500	Trim Level:	Four (4)
Make:	Starcraft	Engine:	6.8L V-10 Gas	Interior Color:	Raven Black
Model:	Allstar	Transmission:	6-Speed Automatic	Primary Ext. Color:	White
Length:	25'	Brakes:	ABS	Secondary Ext. Color:	N/A
Width:	96"	Suspension:	Standard	Body #:	92658B
Memo:	Conventional Instrumentation, Front Air Conditioner, 4.56 Ratio Regular Axle, Frame Pucks, Front vinyl Floor Covering, Chrome Bumper, Cruise Control, Daytime Running Lights, Intermotive Flex Tech Electrical System, Grey Padded Vinyl Driver Area, Grey Padded Vinyl Interior (Walls and Ceiling), Altro Meta Storm Flooring, Door Activated Interior Lights				

<i>Factory Installed Details:</i>	<u>Quantity</u>	<i>Factory Installed Details:</i>	<u>Quantity</u>
o 16" Steel Wheels	6	o LT225/75\$X16 Tires	6
o Front License Plate	1	o Engine Block Heater	1
o Heavy Duty Batteries	1	o Chrome Bumper	1
o Auxiliary Heater Connector	1	o Extra Heavy Duty 225 Amp Alternator	1
o 55 Gallon Fuel Tank	1	o Roscoe Back-Up Camera System w/7" Rearview Monitor/Mirror Combo	1
o Yellow Step Nosing	3	o Front Mud Flap, Passenger Side Only	1
o Extruded Aluminum Running Board on Driver Side	1	o Stainless Steel Wheel Inserts	4
o Valve Stem Extender, inner Rear Wheels	2	o 70,000 BTU Air Conditioner	1
o 65,000 BTU 3-Speed Low Profile Heater	1	o Surface Mount LED Entry Door Exterior Light	1
o Led Rear Center Mount Brake Light	1	o LED Mid Ship Turn/Marker Lights Package	1
o LED Dual Reading Lights In Overhead Luggage	12	o LED Overhead 16" Strip Lights	3
o Ford OEM Stereo w/ 6 Speakers	1	o Electric Passenger Door	1
o Rear Door w/ 2 Windows	1	o Exterior Entry Door Key	1
o Twin Windows either side of Door	2	o Roof Hatch Transpec	1
o Solid Windows	10	o Driver Storage in Overhead with Lock`1	1
o Overhead Luggage Racks	2	o 5 lbs. Fire Extinguisher	1
o 16 Unit First Aid Kit	1	o Emergency Triangle Kit	1
o Back-Up Alarm	1	o Interior Flat Mirror	1
o Yellow "Standee" Line	1	o 1-1/4" Dual Entry Grab Rails Parallel to Entrance Steps	2
o Stanchion and Modesty Panel Behind Driver	1	o Driver Seat w/ Recliner, RH Armrest, 4 Position Lumbar, Mesh Pocket – Level 4 – Raven Black	1
o Berkshire High Back Double Seats – Level 4 – Raven Black	12	o Berkshire High Back Single Seat – Level 4 – Raven Black	1
o US Black Armrest	10	o Recliners (not on Rear Row)	20
o Side Slider	10	o Retractable Seat Belts	25

Total Price: Please contact your Colonial Representative for Current Price

Taxes, Fees & Delivery Are Additional

Other models and Floor plans of a similar size may be available at a lesser price.



colonialbus.com

5171 Intercoastal Court | Monrovia, MD 21770
800.GO.BY.BUS | 301.865.2401 (fax)

Stock # F4450

Vehicle Specifications



Taxes, Fees & Delivery Are Additional

Other models and Floor plans of a similar size may be available at a lesser price.

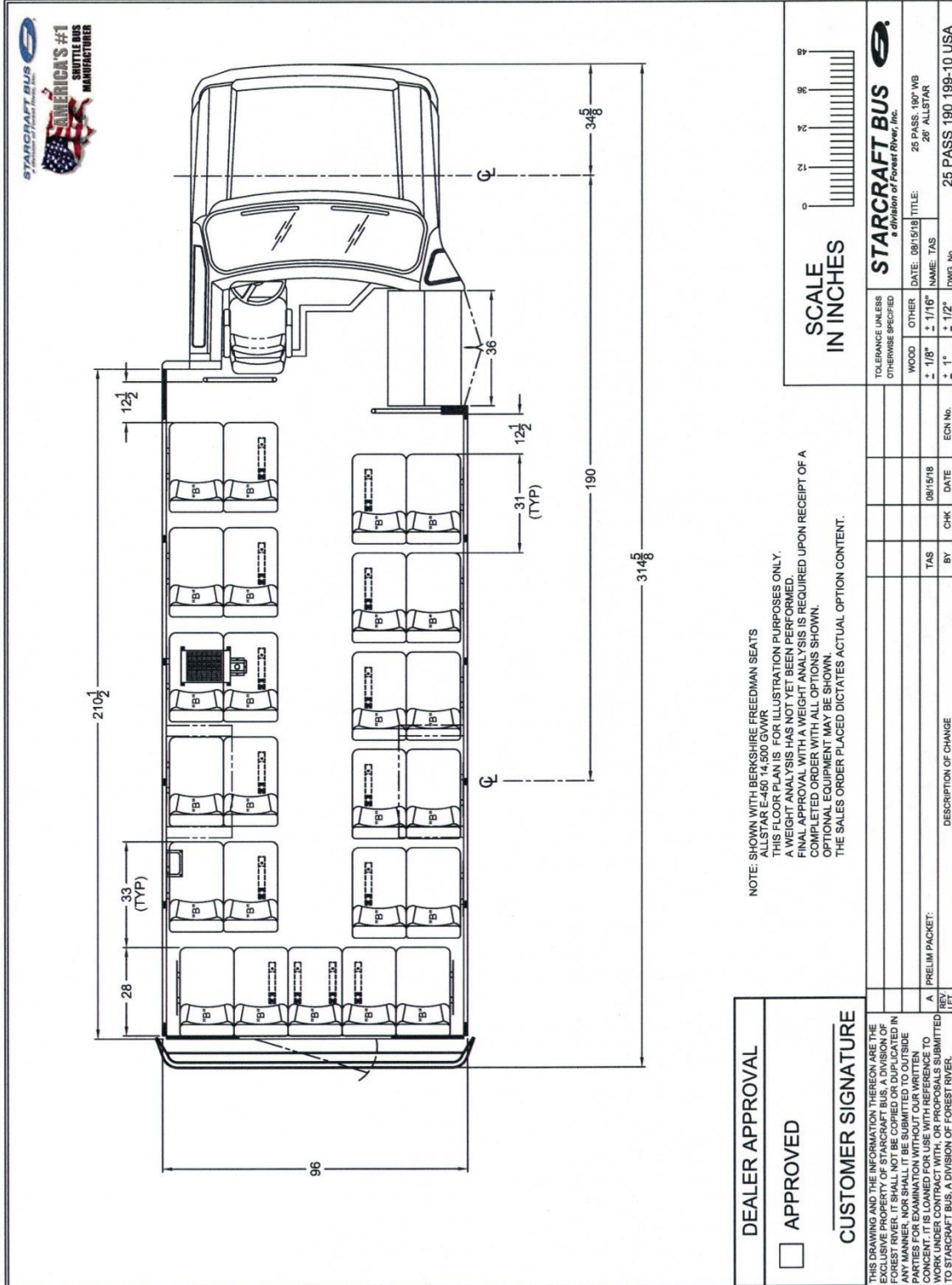


colonialbus.com

5171 Intercoastal Court | Monrovia, MD 21770
800.GO.BY.BUS | 301.865.2401 (fax)

Stock # F4450

Vehicle Specifications



NOTE: SHOWN WITH BERKSHIRE FREEDMAN SEATS
ALLSTAR E-460 14,600 GVWR
THIS FLOOR PLAN IS FOR ILLUSTRATION PURPOSES ONLY.
A WEIGHT ANALYSIS HAS NOT YET BEEN PERFORMED.
FINAL APPROVAL WITH A WEIGHT ANALYSIS IS REQUIRED UPON RECEIPT OF A
COMPLETED ORDER WITH ALL OPTIONS SHOWN.
OPTIONAL EQUIPMENT MAY BE SHOWN.
THE SALES ORDER PLACED DICTATES ACTUAL OPTION CONTENT.

DEALER APPROVAL

APPROVED

CUSTOMER SIGNATURE

THIS DRAWING AND THE INFORMATION THEREON ARE THE EXCLUSIVE PROPERTY OF STARCRAFT BUS, A DIVISION OF FOREST RIVER. IT SHALL NOT BE COPIED OR DUPLICATED IN ANY MANNER, NOR SHALL IT BE SUBMITTED TO OUTSIDE CONCERN. IT IS LOANED FOR USE WITH REFERENCE TO WORK UNDER CONTRACT WITH, OR PROPOSALS SUBMITTED TO STARCRAFT BUS, A DIVISION OF FOREST RIVER.

SCALE IN INCHES

0 12 24 36 48 60 72 84 96

TOLERANCE UNLESS OTHERWISE SPECIFIED: **STARCRAFT BUS**
a division of Forest River, Inc.

WOOD: OTHER:

± 1/8" ± 1/16" ± 1/2"

DATE: 08/15/18 TITLE: 25 PASS, 197" WB
NAME: TAS 280 ALLSTAR

ECN No. DWG. No. 25 PASS 190 199-10 USA

DESCRIPTION OF CHANGE	BY	CHK	DATE	ECN No.
A PRELIM PACKET:	TAS		08/15/18	

Taxes, Fees & Delivery Are Additional
Other models and Floor plans of a similar size may be available at a lesser price.